

THIS DRAWING IS TO BE USED ONLY FOR THE PURPOSE OF ISSUE THAT IT WAS ISSUED FOR AND IS SUBJECT TO AMENDMENT.

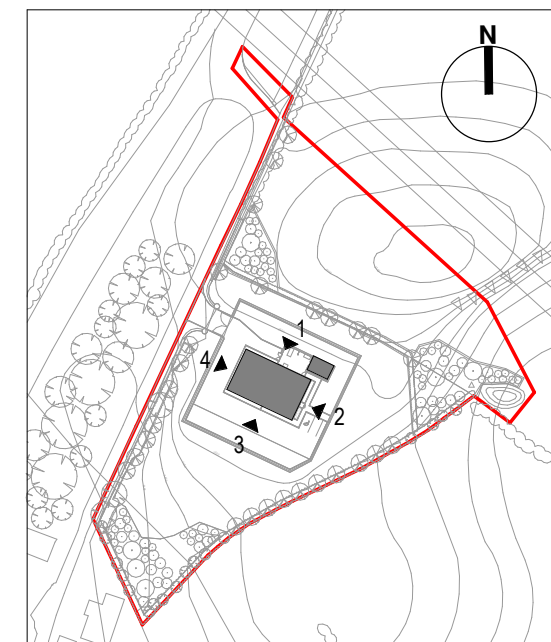
1. THIS DRAWING IS PART OF THE SET OF PLANNING DRAWINGS LISTED BELOW AND IS TO BE READ IN CONJUNCTION WITH THESE DRAWINGS AND ALL OTHER DOCUMENTATION ASSOCIATED WITH THE HORIZON PLANNING SUBMISSION FOR THE ALTERNATIVE PREMISES FOR THE MAGNOX AECC AND DSL.

Planning Drawing Reference	Planning Drawing Title
WN-HOR-MAP-PLN-10001	Magnox AECC and DSL Site Location Plan
WN-HOR-MAP-PLN-10002	Magnox AECC and DSL Site Plan
WN-HOR-MAP-PLN-10003	Magnox AECC and DSL External Works General Arrangement
WN-HOR-MAP-PLN-10004	Magnox AECC and DSL Ground Floor and Roof Plan
WN-HOR-MAP-PLN-10005	Magnox AECC and DSL North, East, South and West Building Elevations
WN-HOR-MAP-PLN-10008	Magnox AECC and DSL Earthworks Cut and Fill Balance
WN-HOR-MAP-PLN-10009	Magnox AECC and DSL External Works Elevations 'A-B' and 'C-D'
WN-HOR-MAP-PLN-10010	Magnox AECC and DSL Landscape and Ecological Enhancement Plan
WN-HOR-MAP-PLN-10012	Magnox AECC and DSL External Lighting Plan
WN-HOR-MAP-PLN-10013	Magnox AECC and DSL External Works Elevation 'E-F'
WN-HOR-MAP-PLN-10014	Magnox AECC and DSL External Works Fencing Detail
WN-HOR-MAP-PLN-10015	Magnox AECC and DSL Highway Works Plan
WN-HOR-MAP-PLN-10017	Magnox AECC and DSL planting Plan

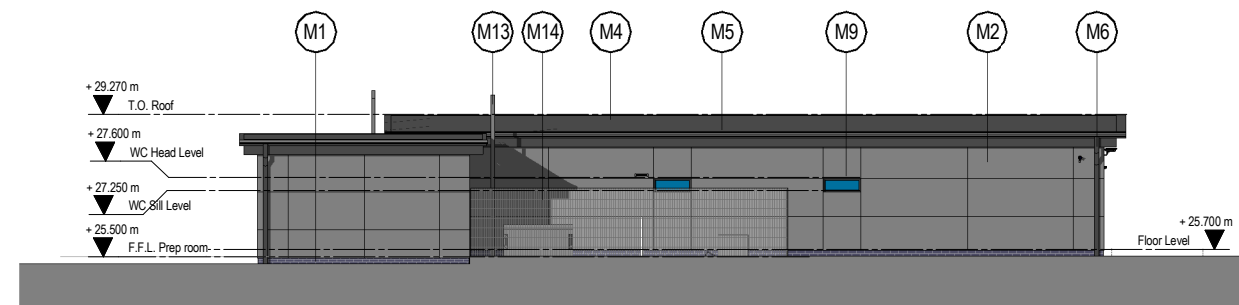
2. DO NOT SCALE FROM THIS DRAWING, USE ONLY PRINTED DIMENSIONS.

3. ALL DIMENSIONS IN MILLIMETRES, ALL CHAINAGES, LEVELS, AND COORDINATES ARE IN METRES UNLESS DEFINED OTHERWISE.

4. THIS DRAWING IS TO BE READ IN CONJUNCTION WITH THE PROJECT HEALTH AND SAFETY FILE FOR ANY IDENTIFIED POTENTIAL RISKS.

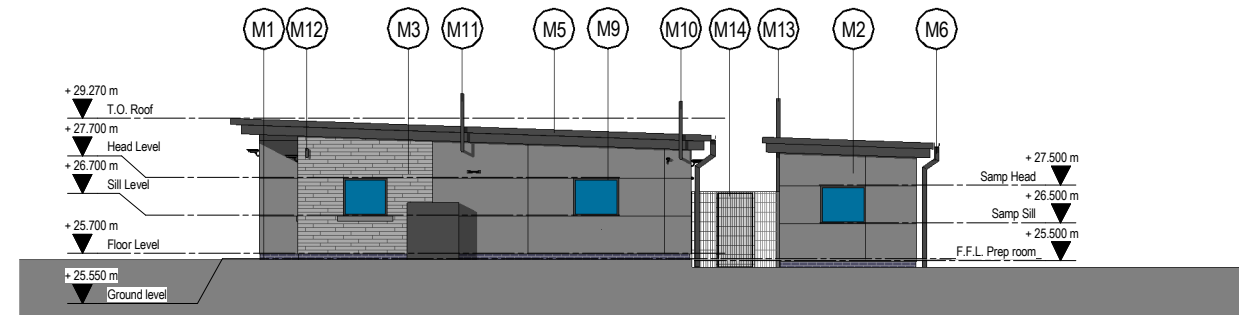


KEY PLAN



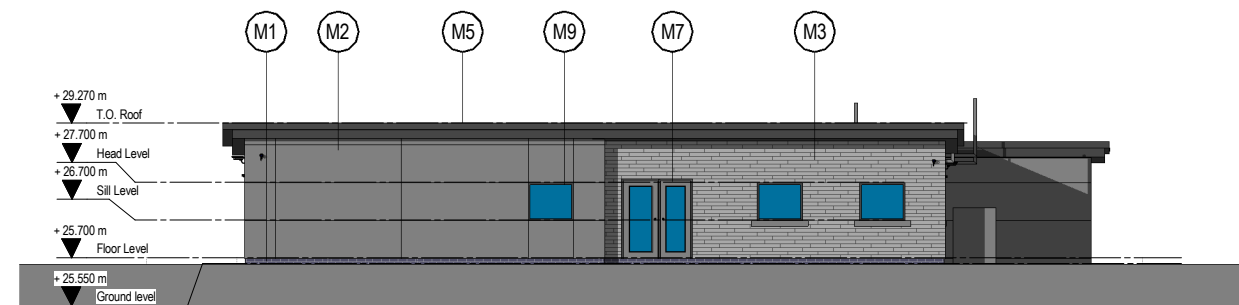
1 NORTH ELEVATION

SCALE: 1 : 100



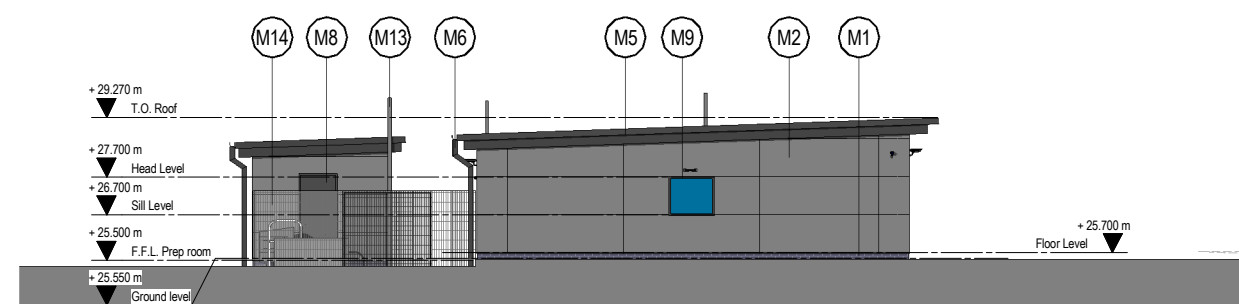
2 EAST ELEVATION

SCALE: 1 : 100



3 SOUTH ELEVATION

SCALE: 1 : 100



4 WEST ELEVATION

SCALE: 1 : 100

MATERIALS LEGEND

- M1 BLUE ENGINEERING BRICK PLINTH
- M2 FLAT PROFILE INSULATED WALL PANELS FINISHED IN BASALT (RAL 7012). PANELS TO BE ARRANGED HORIZONTALLY.
- M3 DRESSED PENMON LIMESTONE WALL CLADDING. STONE TO BE LAID AS A REGULAR, NARROW, COURSE OF BRICKWORK USING RANDOM LENGTHS OF INDIVIDUAL BRICKS.
- M4 LEAD GREY SINGLE PLY ROOF MEMBRANE WITH DECORATIVE PROFILE PVC EXTRUSIONS TO CREATE THE APPEARANCE OF A STANDING SEAM ROOF
- M5 PRESSED ALUMINIUM STEPPED FASCIA FINISHED IN DARK GREY (RAL 7016)
- M6 EXTERNAL ALUMINIUM BOX GUTTER WITH SQUARE ALUMINIUM RAINWATER DOWN PIPES FINISHED IN DARK GREY (RAL 7016)
- M7 LEAF & HALF DOORSET WITH GLAZED VISION PANELS FINISHED IN DARK GREY (RAL 7016)
- M8 SINGLE LEAF DOORSET WITH SOLID INFILL PANELS FINISHED IN DARK GREY (RAL 7016).
- M9 ALUMINIUM CASEMENT WINDOWS FINISHED IN DARK GREY (RAL 7016). WHERE THE WINDOWS ARE TO BE LOCATED WITHIN THE NATURAL STONE CLADDING, THE WINDOW CILL WILL BE IN MATCHING NATURAL STONE.
- M10 UHF RADIO ANTENNA.
- M11 NUCLEAR INDUSTRY AIRWAVE SIGNAL ANTENNA
- M12 SATELLITE PHONE ANTENNA
- M13 SAMPLE PREPARATION ROOM EXTRACT VENTILATION EXHAUST
- M14 1.8M HIGH RIGID MESH FENCE FINISHED IN BASALT (RAL 7012)

Revision Details	By	Check	Date	Rev
Update in line with IC review	CS	HS	19.04.16	PL8
Door Glazing amended at VF request	CS	HS	18.04.16	PL7
Update in line with IC review	CS	HS	07.04.16	PL6
Update to drawing in accordance with client comments	CS	HS	09.03.16	PL5
Update to drawing title block and materials legend in accordance with client comments	RG	HS	26.01.16	PL4

Purpose of Issue: **PLANNING**

Project Title: **MAGNOX ALTERNATIVE PREMISES - AECC AND DSL**

Drawing Title: **MAGNOX AECC AND DSL NORTH, EAST, SOUTH AND WEST ELEVATIONS**

Designed HS	Drawn CS	Checked HS	Approved GP	Date 09-03-2016
Scale @ A1			Zone / Mileage	

HORIZON NUCLEAR POWER WYLFA LIMITED
 Sunrise House
 1420 Charlton Court
 Gloucester Business Park
 Gloucester
 GL3 4AE

PWR NIWCLEAR
HORIZON
 NUCLEAR POWER

Drawing Number	Rev
WN02-HOR-MAP-PLN-10005	PL8

NOT PROTECTIVELY MARKED