



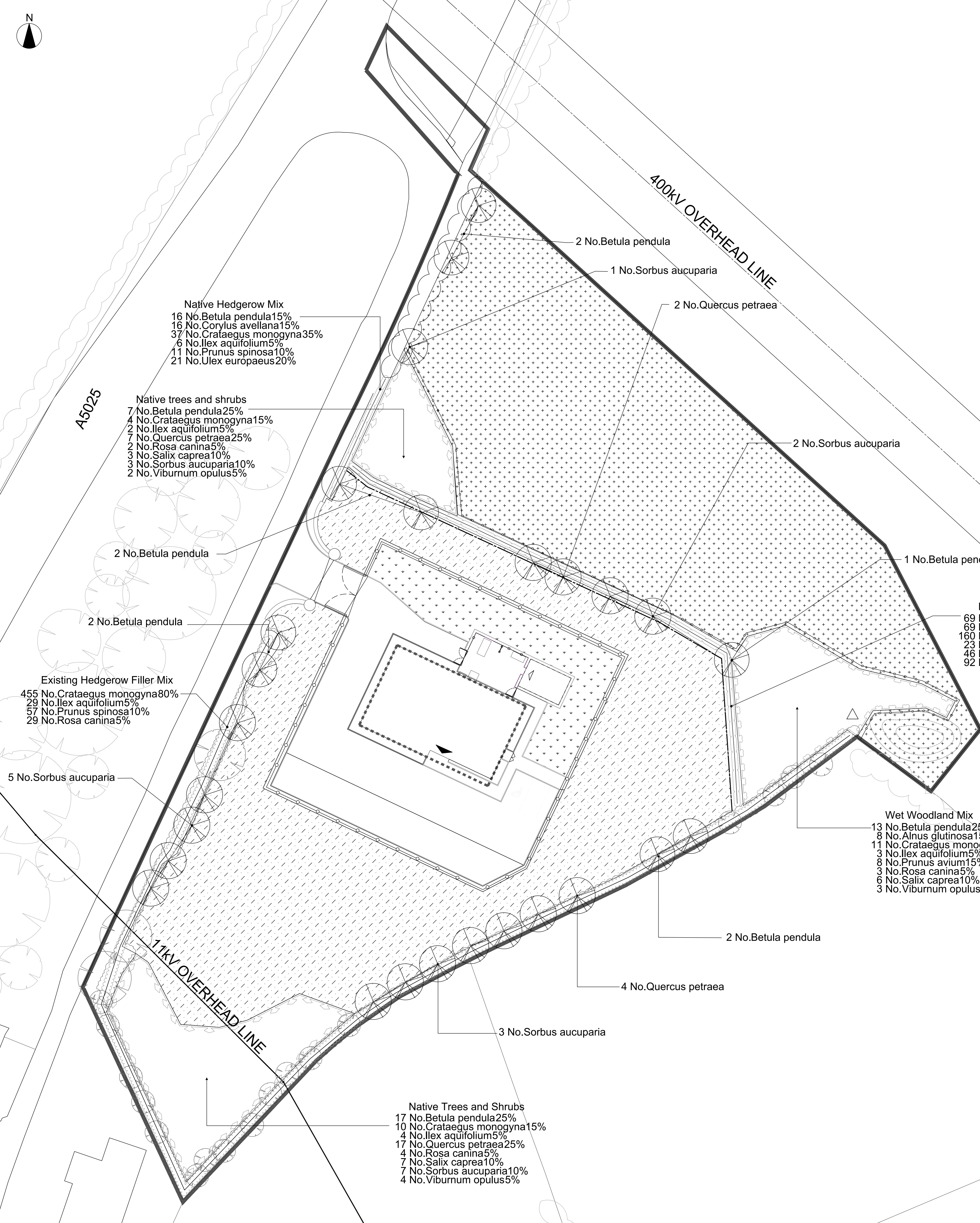
1. This drawing is part of the set of planning drawings listed below in the table and is to be read in conjunction with these drawings and all other documentation associated with the Horizon planning submission for the alternative premises for the Magnox AECC and DSL.

Planning Drawing Reference	Planning Drawing Title
WN-HOR-MAP-PLN-10001	Magnox AECC and DSL Site Location Plan
WN-HOR-MAP-PLN-10002	Magnox AECC and DSL Site Plan
WN-HOR-MAP-PLN-10003	Magnox AECC and DSL External Works General Arrangement
WN-HOR-MAP-PLN-10004	Magnox AECC and DSL Ground Floor and Roof Plan
WN-HOR-MAP-PLN-10005	Magnox AECC and DSL North, East, South and West Building Elevations
WN-HOR-MAP-PLN-10008	Magnox AECC and DSL Earthworks Cut and Fill Balance
WN-HOR-MAP-PLN-10009	Magnox AECC and DSL External Works Elevations 'A-B' and 'C-D'
WN-HOR-MAP-PLN-10010	Magnox AECC and DSL Landscape and Ecological Enhancement Plan
WN-HOR-MAP-PLN-10012	Magnox AECC and DSL External Lighting Plan
WN-HOR-MAP-PLN-10013	Magnox AECC and DSL External Works Elevation 'E-F'
WN-HOR-MAP-PLN-10014	Magnox AECC and DSL External Works Fencing Details
WN-HOR-MAP-PLN-10015	Magnox AECC and DSL Highway Works Plan
WN-HOR-MAP-PLN-10017	Magnox AECC and DSL Planting Plan

- Do not scale from this drawing use only printed dimensions
- All dimensions in millimetres all changes in levels and coordinates are in metres unless defined otherwise
- This drawing is to be read in conjunction with the project health and safety file for any identified potential risks
- All planting of native trees and shrubs to occur following construction of the building in the first available planting season, November to March
- All plant material to be of UK provenance

Legend

- Alternative premises for the Magnox AECC DSL Application Site Boundary
- Existing 400kV overhead line
- Existing 11kV overhead line
- Existing vegetation within AECC/ DSL boundary
 - Trees to be retained
 - Hedgerows to be retained
 - Hedgerow to be gapped-up with native shrubs - See Hedgerow Filler Mix
- Existing vegetation outside AECC/ DSL boundary
 - Trees
 - Hedgerows
- Softworks proposals
 - Amenity close mown grass
Germinal Amenity: A22 Low Maintenance
 - Wildflower meadow mix
Germinal Amenity: RE9 Farmland Mixture with additional Succisa pratensis (Devil's-bit Scabious)
 - Agricultural grass mix
Germinal Amenity: RRE1 Traditional Hay Meadow
 - Native Trees and Shrubs mix
 - Wet Woodland mix
 - Native feathered tree
 - Native hedgerow mix
 - Hedgerow Filler mix
 - Attenuation pond sown with wet grassland mix
- Hardworks proposals
 - 1.2m stock proof fence
 - Temporary 1.2m Rylock mesh fence (to protect new planting from S/W winds)
 - Main perimeter fence
Secureguard-358, 3m tall to BS 1722-14:2006. Colour RAL 7012 - Basalt Grey
 - Inner compound fence
Proguard, 1.8m tall to BS EN 1722-14:2006. Colour RAL 7012 - Basalt Grey
 - Refuge and Hibernacula
To be constructed for reptile and amphibian habitat



Full Plant Schedule

Number	Species	Common Name	Specification	Height
9 No.	Betula pendula	Common Silver Birch	Feather: 5 brks :2x :B :5metre spacing	175-200cm
4 No.	Quercus petraea	Sessile Oak	Feather: 5 brks :2x :B :5m spacing	175-200cm
2 No.	Quercus petraea	Sessile Oak	Feather: 5 brks :2x :B :5metre spacing	175-200cm
8 No.	Sorbus aucuparia	Rowan	Feather: 5 brks :2x :B :5metre spacing	175-200cm
3 No.	Sorbus aucuparia	Rowan	Feather: 5 brks :2x :B :5m spacing	175-200cm

Hedgerow Filler Mix

Number	Species	Common Name	Height	Specification	Pot Size
455 No.	Crataegus monogyna	Common Hawthorn	40-60cm	1+1 :Transplant :B	
29 No.	Ilex aquifolium		40-60cm	Leader With Laterals :C	3L
57 No.	Prunus spinosa	Blackthorn	40-60cm	1+1 :Transplant :Branched :2 brks	
29 No.	Rosa canina	Dog Rose	40-60cm	1+1 :Transplant :Branched :3 brks	
Total :570 No.					

Native Hedgerow Mix

Number	Species	Common Name	Height	Specification	Pot Size	Density
85 No.	Betula pendula	Common Silver Birch	40-60cm	1+1 :Transplant :B	3L	6/m
85 No.	Corylus avellana	Common Hazel	40-60cm	1+1 :Transplant :Branched :2 brks :B		6/m
197 No.	Crataegus monogyna	Common Hawthorn	40-60cm	1+1 :Transplant :B		6/m
29 No.	Ilex aquifolium	Common Holly	40-60cm	Leader With Laterals :C	3L	6/m
57 No.	Prunus spinosa	Blackthorn	40-60cm	1+1 :Transplant :Branched :2 brks :B		6/m
113 No.	Ulex europaeus	Common Gorse	30-40cm	Bushy :5 brks :C	3L	6/m
Total :566 No.						

Wet Woodland Mix

Number	Species	Common Name	Height	Specification	Pot Size	Density
8 No.	Alnus glutinosa	Common Alder	40-60cm	1+1 :Transplant :B		2.5Ctr
13 No.	Betula pendula	Common Silver Birch	40-60cm	1+1 :Transplant :B		2.5Ctr
11 No.	Crataegus monogyna	Common Hawthorn	40-60cm	1+1 :Transplant :B		2.5Ctr
3 No.	Ilex aquifolium		40-60cm	Leader With Laterals :C	3L	2.5Ctr
8 No.	Prunus avium	Wild Cherry	40-60cm	1+1 :Transplant :B		2.5Ctr
3 No.	Rosa canina	Dog Rose	40-60cm	1+1 :Transplant :Branched :3 Brks :B		2.5Ctr
6 No.	Salix caprea	Goat Willow	40-60cm	0/1 :Cutting :B		2.5Ctr
3 No.	Viburnum opulus	Guelder Rose	40-60cm	1+1 :Transplant :Branched :2 Brks :B		2.5Ctr
Total :55 No.						

Updated text in key	PHM/SF	19.04.16	PL4
Updated in Response to Comment from Consistency and Coherence Review.	CN/SF	15.04.16	PL3
Updated Masterplan	PHM/SF	07.04.16	PL2
FIRST ISSUE	PHM/SF	02.03.16	PL1

Purpose of Issue: PLANNING

Project Title: MAGNOX ALTERNATIVE PREMISES - AECC AND DSL

Drawing Title: PLANTING PLAN

Designed	Drawn	Checked	Approved	Date
PHM	PHM	SF	CF	02/03/16

Scale 1:200 @ A0

HORIZON NUCLEAR POWER WYLFA LIMITED

Sunrise House
1420 Charlton Court
Gloucester Business Park
Gloucester
GL3 4AE

PWR NIWCLEAR
HORIZON
NUCLEAR POWER



NOT PROTECTIVELY MARKED

Drawing Number	Rev
WN-HOR-MAP-PLN-10017	PL4