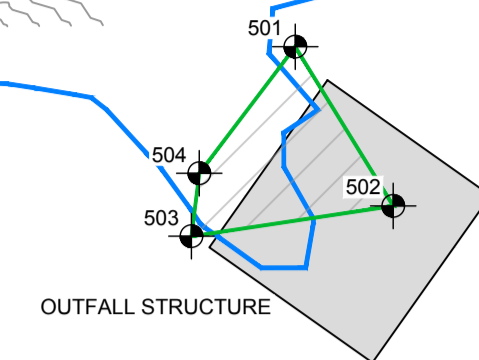
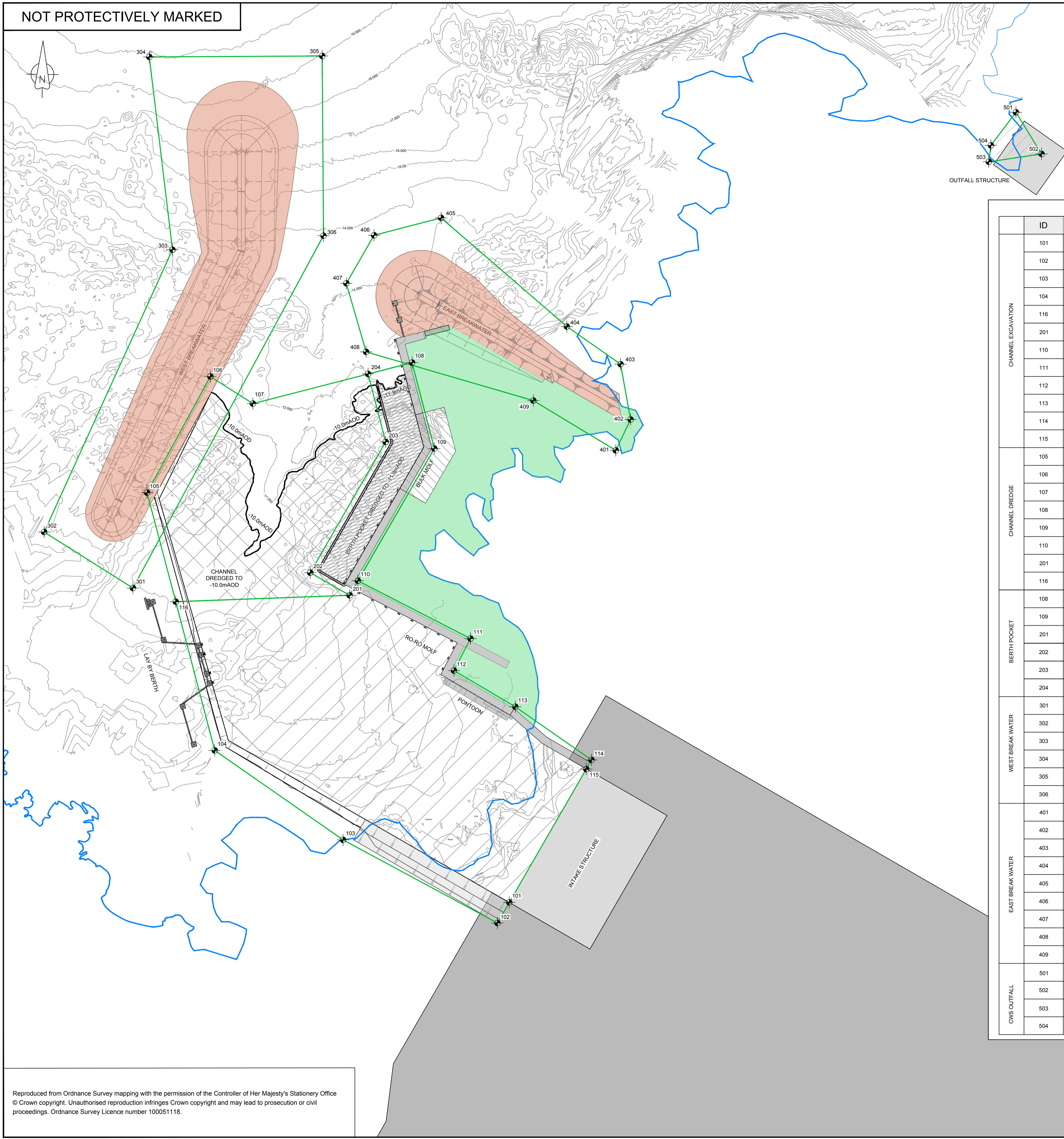


NOT PROTECTIVELY MARKED



	ID	EASTING	NORTHING	LATITUDE	LONGITUDE	GRID Ref.	
CHANNEL EXCAVATION	101	234746.109	393442.138	53.411835	-4.4877598	SH 34746 93442	
	102	234734.093	393421.318	53.411646	-4.4879283	SH 34734 93421	
	103	234577.885	393505.453	53.412352	-4.4903202	SH 34578 93505	
	104	234447.966	393595.980	53.413124	-4.4923204	SH 34448 93596	
	116	234408.527	393746.475	53.414463	-4.4929923	SH 34408 93746	
	201	234584.501	393752.950	53.414577	-4.4903507	SH 34584 93753	
	110	234592.824	393767.711	53.414712	-4.4902333	SH 34593 93768	
	111	234706.856	393709.117	53.414221	-4.4884886	SH 34707 93709	
	112	234690.130	393676.770	53.413926	-4.4887230	SH 34690 93677	
	113	234752.219	393640.153	53.413616	-4.4877706	SH 34752 93640	
	114	234829.342	393586.329	53.413157	-4.4865832	SH 34829 93586	
	115	234824.020	393577.084	53.413073	-4.4866583	SH 34824 93577	
	CHANNEL DREDGE	105	234379.500	393856.808	53.415445	-4.4934866	SH 34379 93857
		106	234443.534	393974.313	53.416520	-4.4925858	SH 34444 93974
		107	234486.578	393946.926	53.416288	-4.4919244	SH 34487 93947
108		234647.741	393988.393	53.416711	-4.4895237	SH 34648 93988	
109		234670.258	393901.485	53.415937	-4.4891396	SH 34670 93901	
110		234592.824	393767.711	53.414712	-4.4902333	SH 34593 93768	
201		234584.501	393752.950	53.414577	-4.4903507	SH 34584 93753	
116		234408.527	393746.475	53.414463	-4.4929923	SH 34408 93746	
BERTH POCKET		108	234647.741	393988.393	53.416711	-4.4895237	SH 34648 93988
		109	234670.258	393901.485	53.415937	-4.4891396	SH 34670 93901
	201	234584.501	393752.950	53.414577	-4.4903507	SH 34584 93753	
	202	234544.608	393775.854	53.414770	-4.4909623	SH 34545 93776	
	203	234621.005	393908.177	53.415982	-4.4898835	SH 34621 93908	
WEST BREAK WATER	301	234365.156	393780.264	53.414574	-4.4936514	SH 34365 93760	
	302	234275.337	393816.974	53.415055	-4.4950313	SH 34275 93817	
	303	234405.199	394102.671	53.417661	-4.4932295	SH 34405 94103	
	304	234381.725	394297.812	53.419406	-4.4936850	SH 34382 94298	
	305	234556.762	394298.730	53.419469	-4.4910542	SH 34557 94299	
	306	234558.059	394116.866	53.417836	-4.4909392	SH 34558 94117	
EAST BREAK WATER	401	234853.895	393899.615	53.415978	-4.4863784	SH 34854 93900	
	402	234868.888	393930.816	53.416263	-4.4861694	SH 34869 93931	
	403	234858.762	393986.826	53.416763	-4.4863509	SH 34859 93987	
	404	234804.361	394024.950	53.417088	-4.4871886	SH 34804 94025	
	405	234677.112	394134.902	53.418036	-4.4891591	SH 34677 94135	
	406	234609.249	394117.288	53.417856	-4.4901699	SH 34609 94117	
	407	234581.157	394068.630	53.417411	-4.4905667	SH 34581 94069	
	408	234601.209	393999.304	53.416788	-4.4905303	SH 34581 93999	
	409	234770.467	393950.009	53.416405	-4.4876588	SH 34770 93950	
CNS OUTFALL	501	235259.063	394241.725	53.419171	-4.4804685	SH 35259 94241	
	502	235284.900	394199.631	53.418801	-4.4800701	SH 35284 94199	
	503	235231.520	394191.610	53.418713	-4.4808621	SH 35231 94191	
	504	235233.600	394208.260	53.418866	-4.4808413	SH 35233 94208	

**GENERAL LEGEND**

SEAWATER	REVETMENT SLOPE
RECLAIMED GROUND	CONCRETE / STEEL
BREAKWATER / ROCK	SEABED / GROUND
GRAVEL	MEAN HIGH WATER SPRINGS
	CONSTRUCTION ENVELOPE

- NOTES**
- REFER TO DRAWING WN0907-HZCON-LAP-DRG-00001 FOR GENERAL NOTES AND DRAWING STANDARDS.
  - ALL DIMENSIONS ARE IN MILLIMETRES UNLESS NOTED OTHERWISE.
  - ALL LEVELS ARE IN METRES RELATIVE TO ORDNANCE DATUM UNLESS NOTED OTHERWISE.
  - DREDGING WORKS INCLUDE THE FOLLOWING:
    - HARBOUR AND BERTH POCKET FORMATION WITHIN THE AREA COORDINATED HERE.
    - REMOVAL OF SOFT MATERIAL BENEATH BREAKWATER FOUNDATION WITHIN ENVELOPE INDICATIVE.
  - DREDGING TOLERANCE UP TO 0.6m FROM DESIGN LEVEL.
  - ENVELOPE PROVIDED FOR INDICATIVE CONSTRUCTION VARIATION.

**KEY**

	CHANNEL DREDGING
	CHANNEL EXCAVATION
	BERTH POCKET DREDGING

2.0	MARCH 2016	MARINE LICENCE SUBMISSION	HNPWL	HNPWL	HNPWL
Rev	Rev. Date	Purpose of revision	Drawn	Checked	Approved

**HORIZON NUCLEAR POWER**  
 Sunrise House, 1420 Charlton Court, Gloucester Business Park, Gloucester, GL3 4AE, UK  
 Freephone: 0845 300 6816 Email: info@horizonnuclearpower.com

**Project**  
 WYLFA NEWYDD  
 MARINE LICENCE

**Drawing Title**  
 DREDGING  
 GENERAL ARRANGEMENT

Security Status  
**NOT PROTECTIVELY MARKED**

Scale	1:2000@A1	Sheet(s)	1 of 1	Rev	2.0
Drawing Number	WN0907-HZCON-LAP-DRG-00008			Rev	2.0

© Copyright Horizon Nuclear Power Wylfa Limited. Not to be reproduced (in full or part) without prior permission of Horizon Nuclear Power Wylfa Limited.

Reproduced from Ordnance Survey mapping with the permission of the Controller of Her Majesty's Stationery Office © Crown copyright. Unauthorised reproduction infringes Crown copyright and may lead to prosecution or civil proceedings. Ordnance Survey Licence number 100051118.

