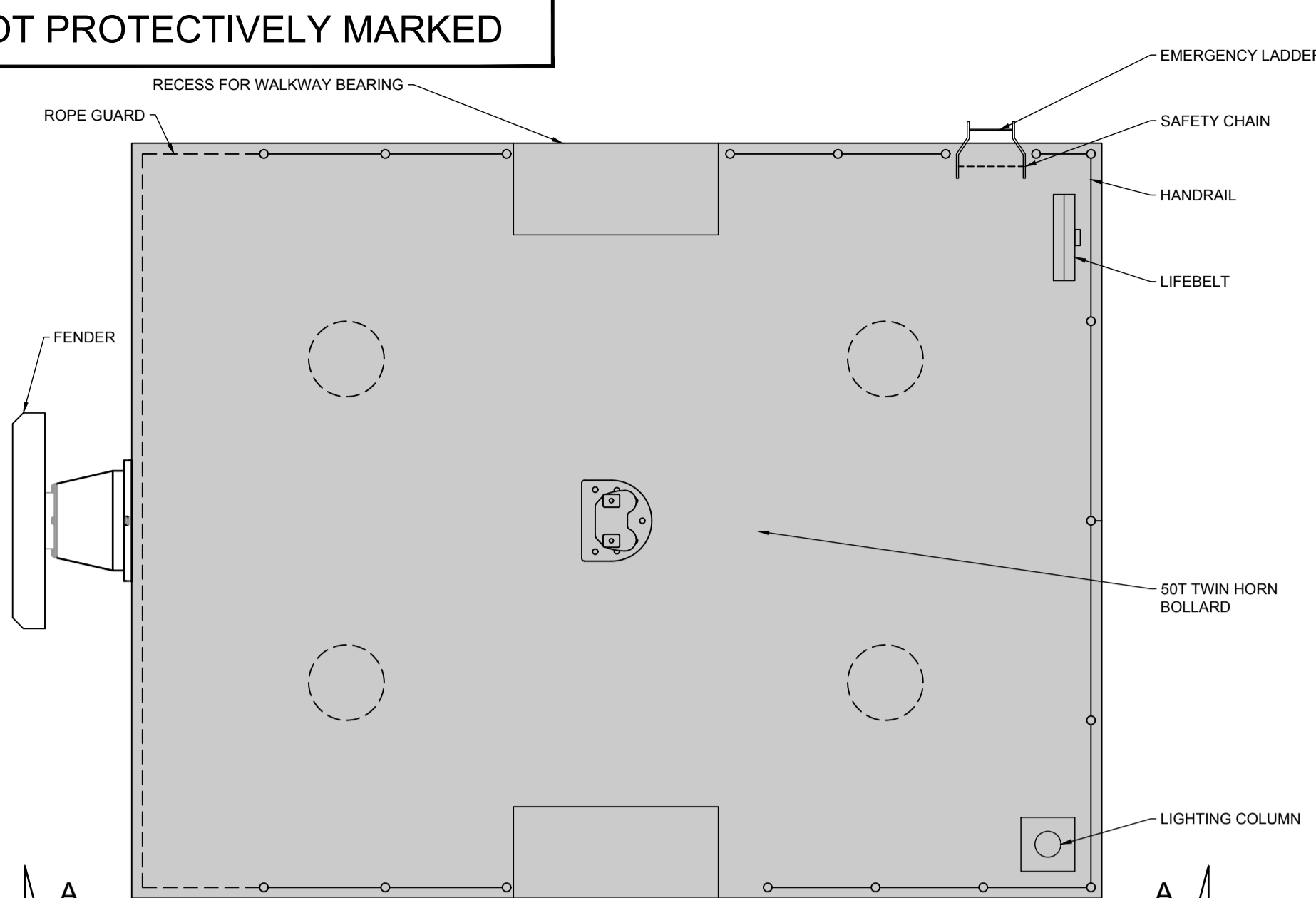
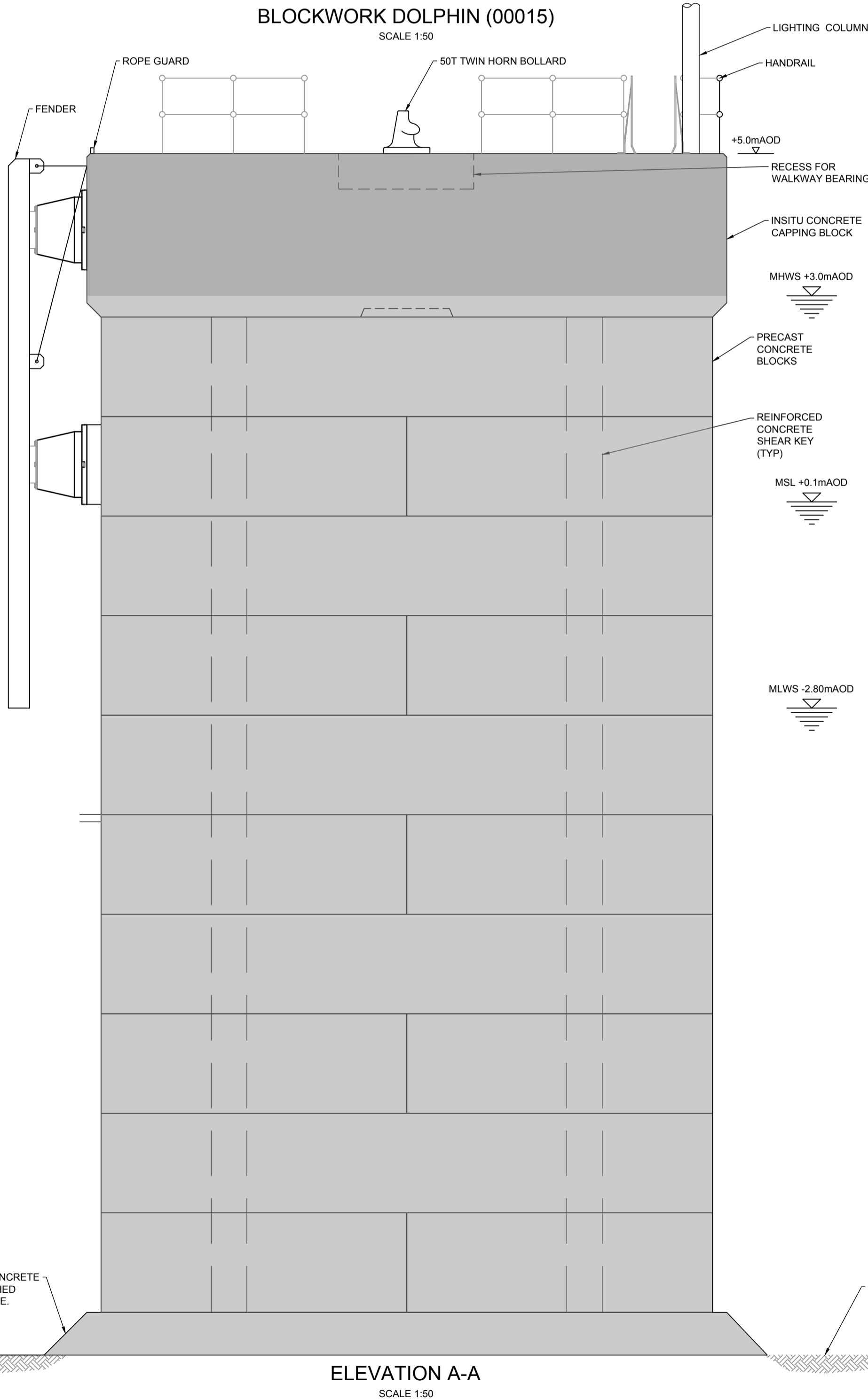


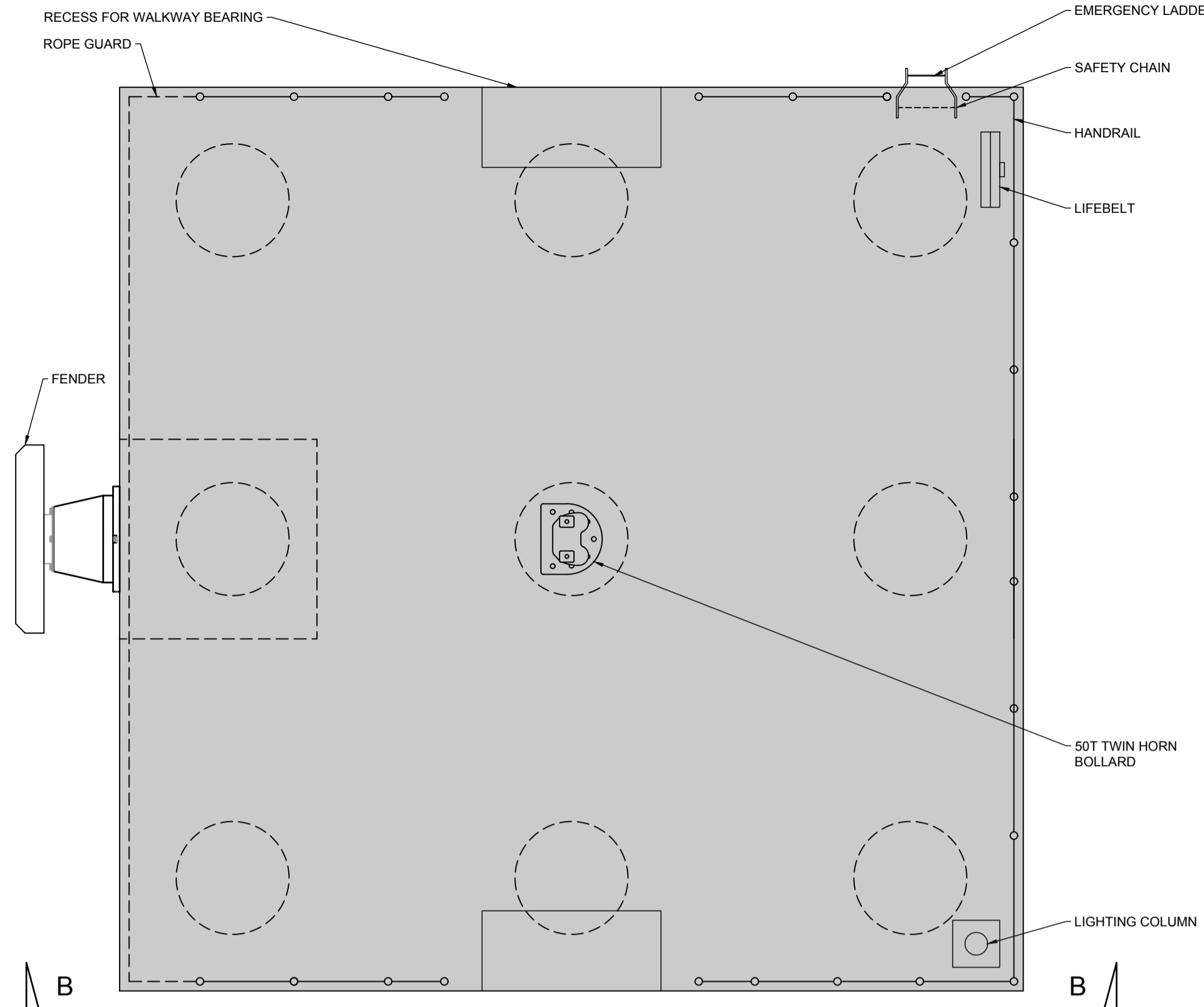
NOT PROTECTIVELY MARKED



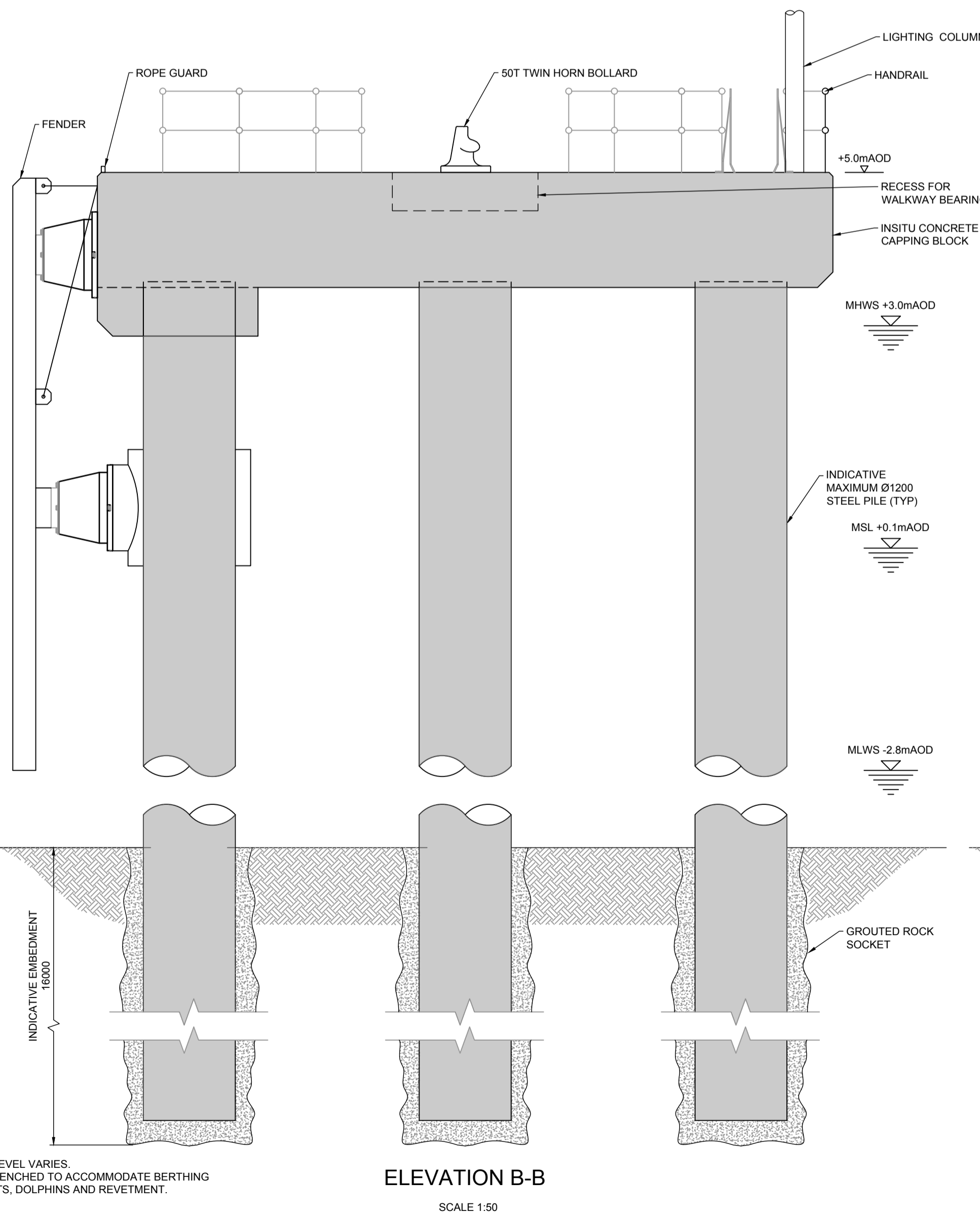
PLAN A OPTION 1  
BLOCKWORK DOLPHIN (00015)  
SCALE 1:50



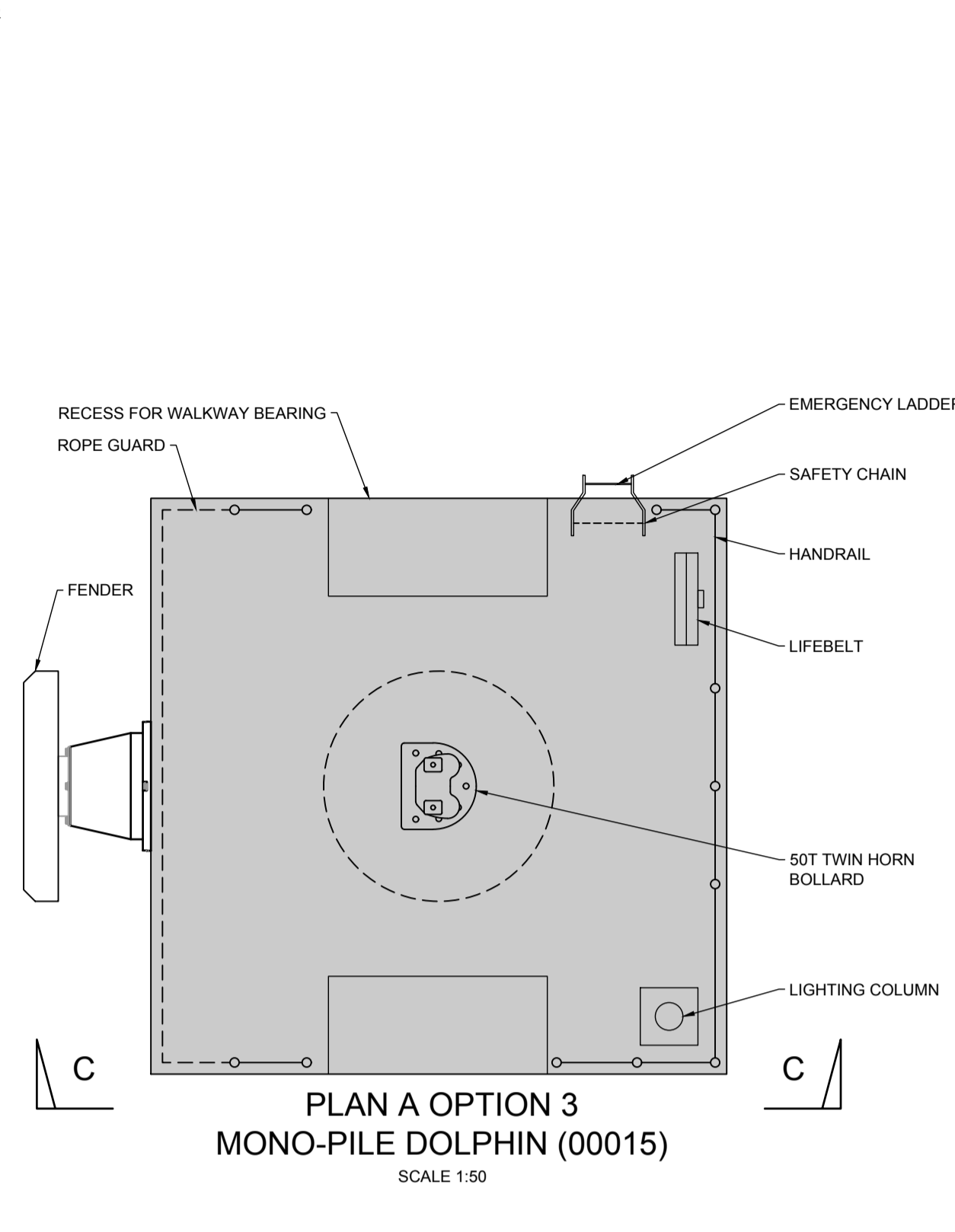
ELEVATION A-A  
SCALE 1:50



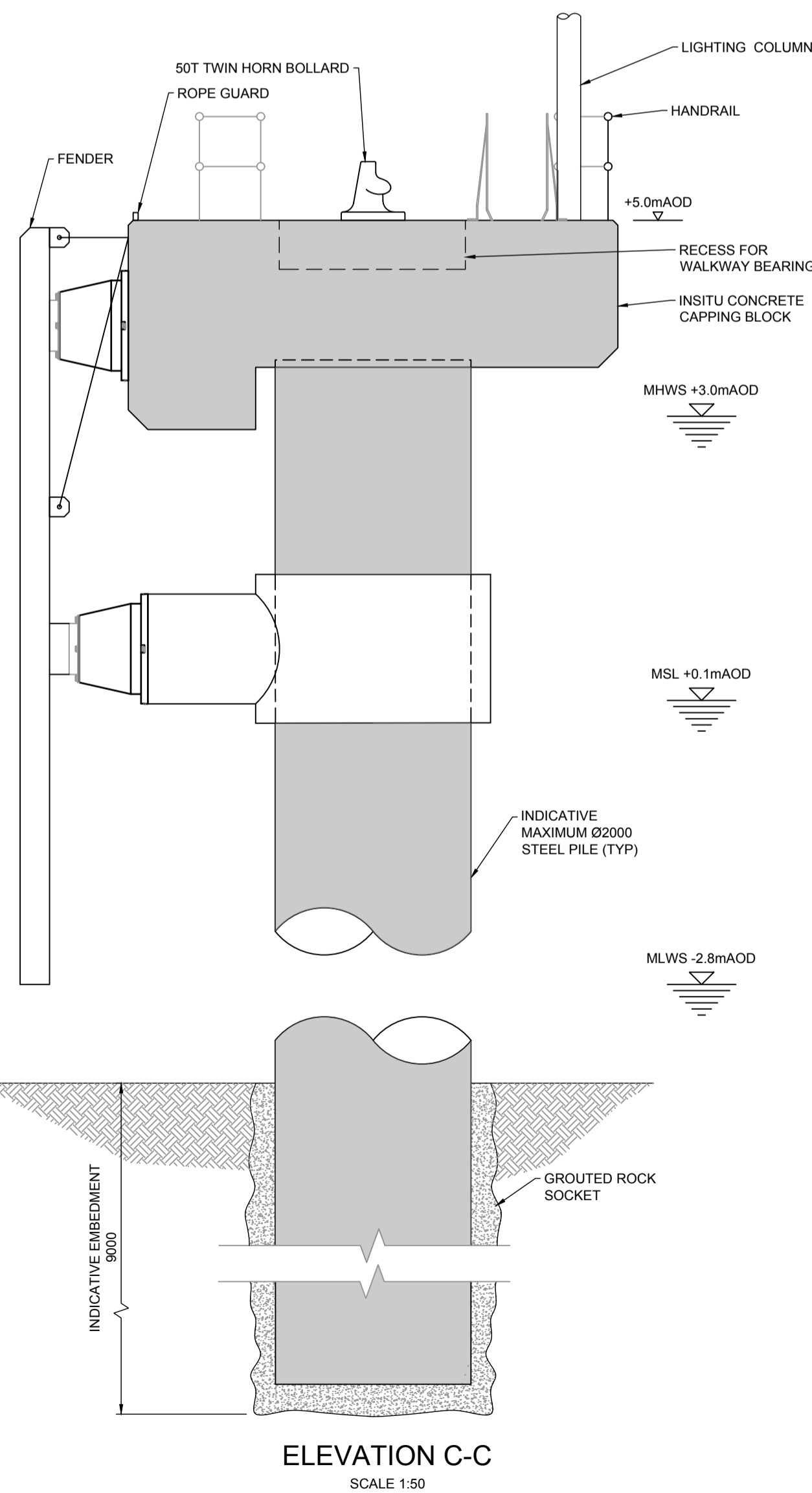
PLAN A OPTION 2  
MULTI-PILE DOLPHIN (00015)  
SCALE 1:50



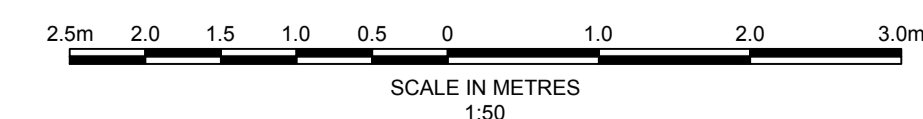
ELEVATION B-B  
SCALE 1:50



PLAN A OPTION 3  
MONO-PILE DOLPHIN (00015)  
SCALE 1:50



ELEVATION C-C  
SCALE 1:50



GENERAL LEGEND

SEAWATER	REVETMENT SLOPE
RECLAIMED GROUND	CONCRETE / STEEL
BREAKWATER / ROCK	SEABED / GROUND
GRAVEL	MEAN HIGH WATER SPRINGS
	CONSTRUCTION ENVELOPE

- NOTES
- REFER TO DRAWING WN0907-HZCON-LAP-DRG-00001 FOR GENERAL NOTES AND DRAWING STANDARDS.
  - ALL DIMENSIONS ARE IN MILLIMETRES UNLESS NOTED OTHERWISE.
  - ALL LEVELS ARE IN METRES RELATIVE TO ORDNANCE DATUM UNLESS NOTED OTHERWISE.

2.0	MARCH 2016	MARINE LICENCE SUBMISSION	HNPWL	HNPWL	HNPWL
Rev	Rev. Date	Purpose of revision	Drawn	Checked	Approved

**HORIZON**  
NUCLEAR POWER  
Sunrise House, 1420 Charlton Court, Gloucester Business Park, Gloucester, GL3 4AE, UK  
Freephone: 0845 300 6816 Email: info@horizonnuclearpower.com

Project  
**WYLFA NEWYDD  
MARINE LICENCE**

Drawing Title  
**LAYBY BERTH  
BERTHING DOLPHIN OPTIONS  
GENERAL ARRANGEMENT  
AND TYPICAL ELEVATIONS**

Security Status  
**NOT PROTECTIVELY MARKED**

Scale  
1:50@A1

Sheet(s) 1 of 1

Drawing Number  
WN0907-HZCON-LAP-DRG-00020

Rev  
2.0

© Copyright Horizon Nuclear Power Wylfa Limited. Not to be reproduced (in full or part) without prior permission of Horizon Nuclear Power Wylfa Limited.