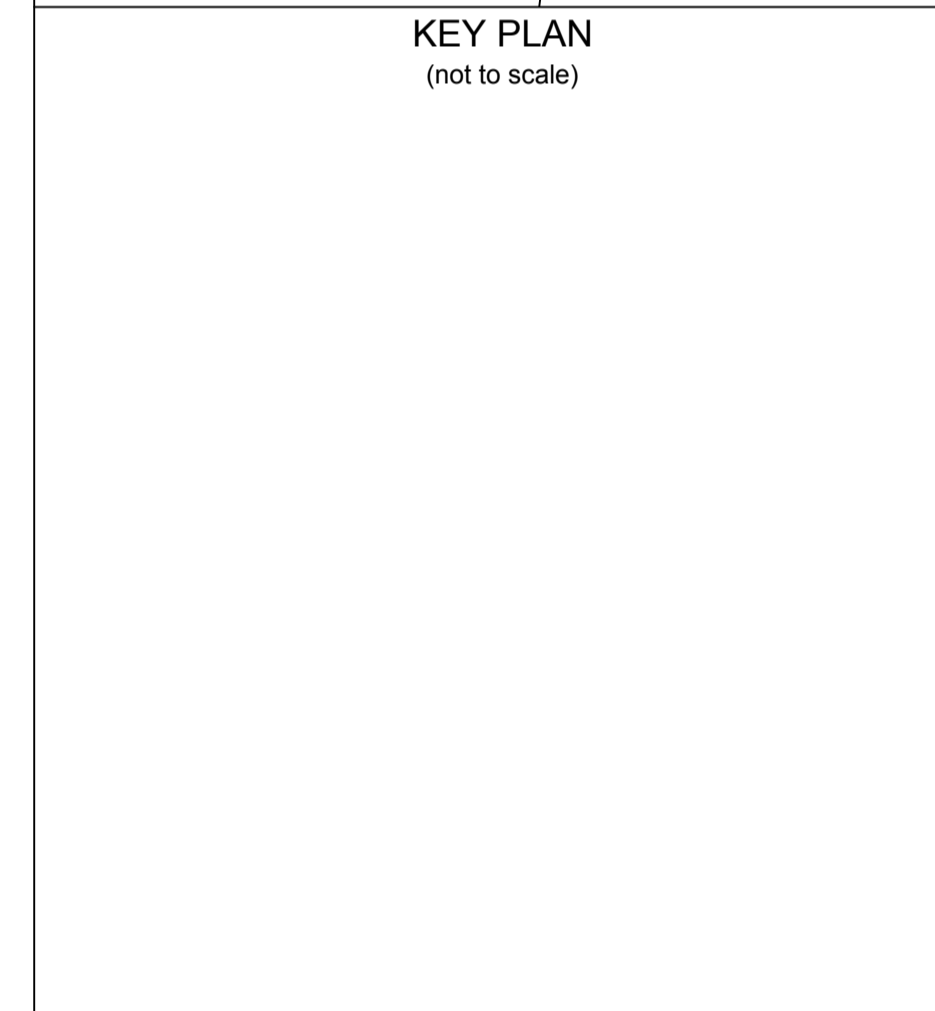
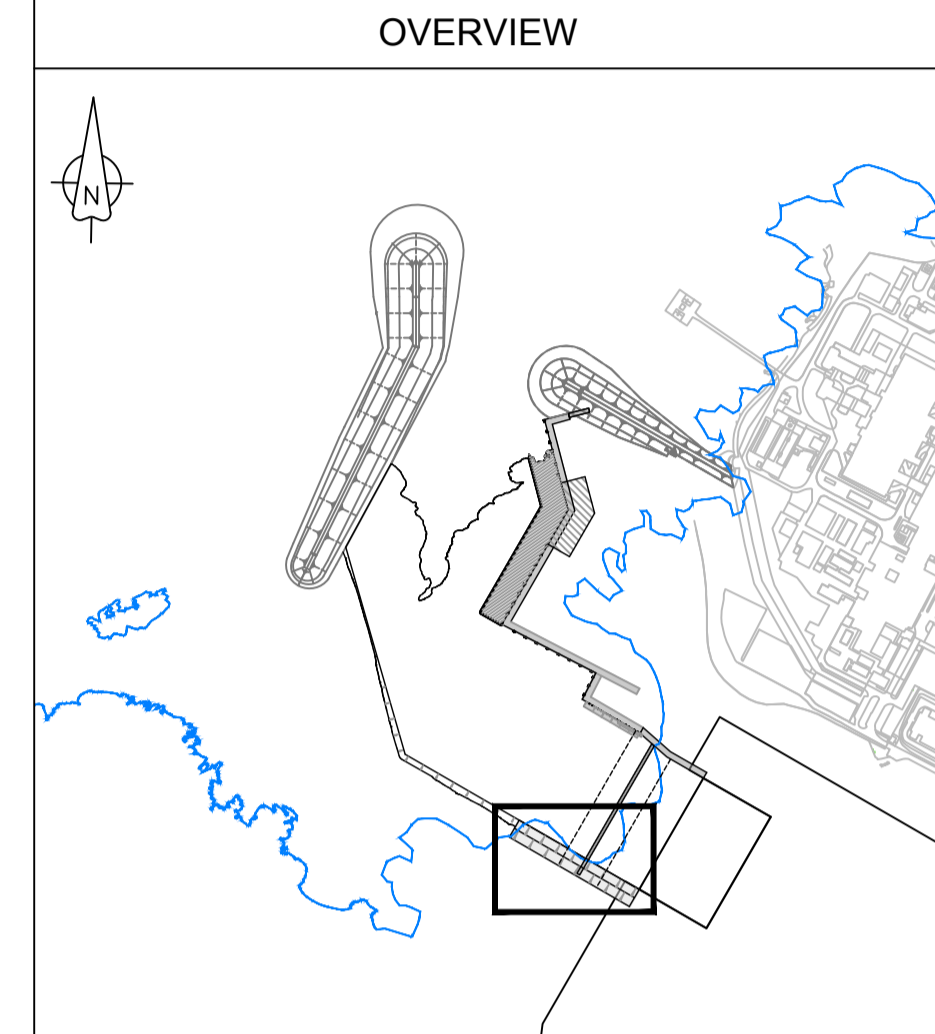


**GENERAL LEGEND**

	SEAWATER		REVETMENT SLOPE
	RECLAIMED GROUND		CONCRETE / STEEL
	BREAKWATER / ROCK		SEABED / GROUND
	GRAVEL		MEAN HIGH WATER SPRINGS
			CONSTRUCTION ENVELOPE

- NOTES**
- REFER TO DRAWING WN0907-HZCON-LAP-DRG-00001 FOR GENERAL NOTES AND DRAWING STANDARDS.
  - ALL DIMENSIONS ARE IN MILLIMETRES UNLESS NOTED OTHERWISE.
  - ALL LEVELS ARE IN METRES RELATIVE TO ORDNANCE DATUM UNLESS NOTED OTHERWISE.
  - STRATIGRAPHY SHOWN IS INDICATIVE.
  - THE SEAWARD LIMIT OF THE SOUTHERN WING STRUCTURE WILL BE DEPENDENT UPON THE ENGINEERING DETAIL AND FINAL GROUND ELEVATION.



2.0	MARCH 2018	MARINE LICENCE SUBMISSION	HNPWL	HNPWL	HNPWL
Rev	Rev. Date	Purpose of revision	Drawn	Checked	Approved

**HORIZON**  
NUCLEAR POWER

Sunrise House, 1420 Charlton Court, Gloucester Business Park, Gloucester, GL3 4AE, UK  
Freephone: 0845 300 6816 Email: info@horizonnuclearpower.com

Project  
**WYLFA NEWYDD**  
**MARINE LICENCE**

Drawing Title  
**COOLING WATER INTAKE CHANNEL**  
**SOUTH WING STRUCTURE**  
**GENERAL ARRANGEMENT**  
**AND TYPICAL SECTION**

Security Status  
**NOT PROTECTIVELY MARKED**

Scale  
AS SHOWN@A1 | Sheet(s) 1 of 1

Drawing Number  
**WN0907-HZCON-LAP-DRG-00022** | Rev  
**2.0**

© Copyright Horizon Nuclear Power Wylfa Limited. Not to be reproduced (in full or part) without prior permission of Horizon Nuclear Power Wylfa Limited.

