

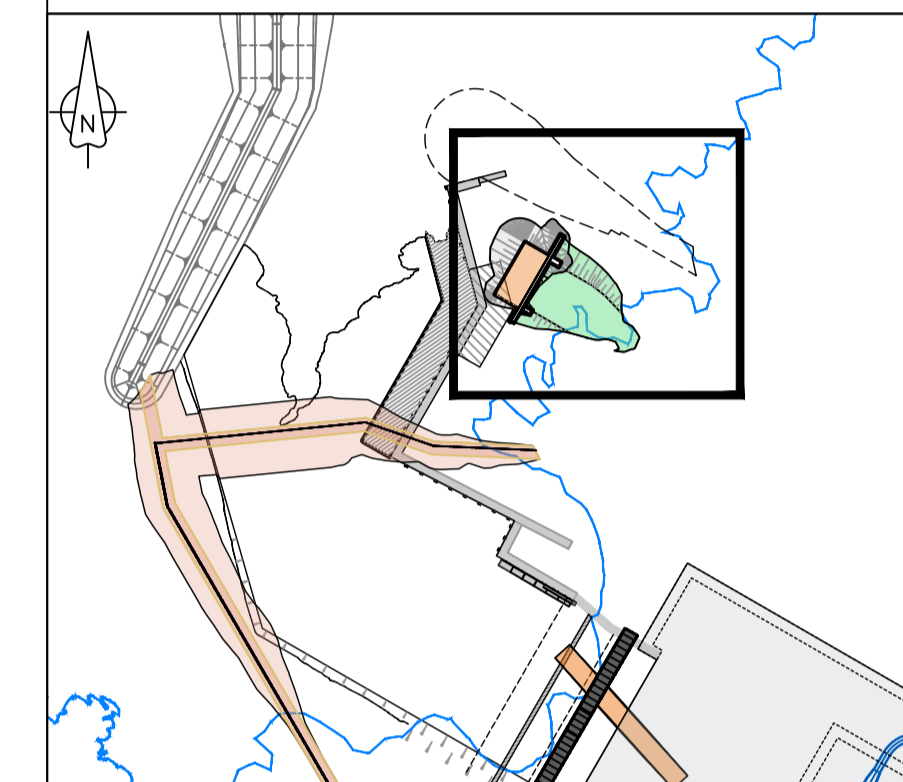
PLAN
SCALE 1:1000

GENERAL LEGEND

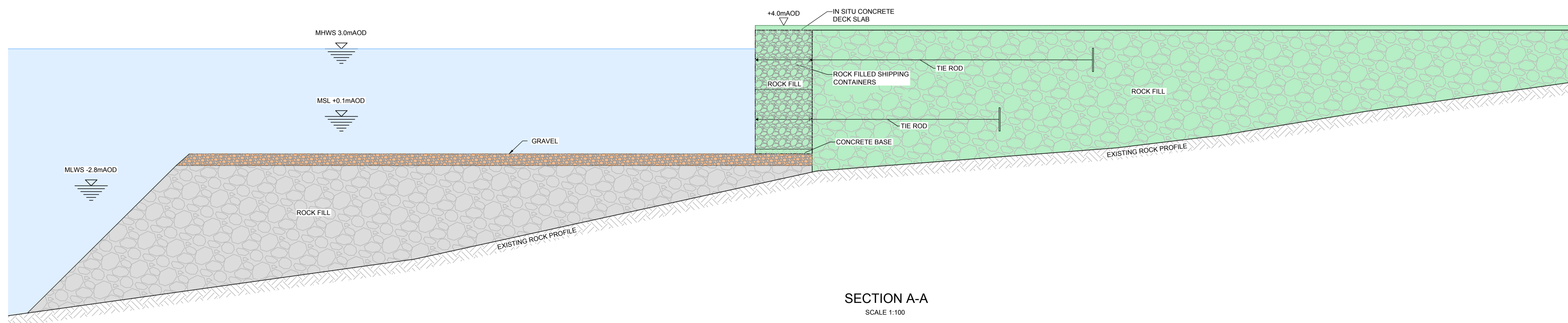
SEAWATER	REVETMENT SLOPE
RECLAIMED GROUND	CONCRETE / STEEL
BREAKWATER / ROCK	SEABED / GROUND
GRAVEL	MEAN HIGH WATER SPRINGS
	CONSTRUCTION ENVELOPE

- NOTES**
1. REFER TO DRAWING WN0907-HZCON-LAP-DRG-00001 FOR GENERAL NOTES AND DRAWING STANDARDS.
 2. ALL DIMENSIONS ARE IN MILLIMETRES UNLESS NOTED OTHERWISE.
 3. ALL LEVELS ARE IN METRES RELATIVE TO ORDNANCE DATUM UNLESS NOTED OTHERWISE.
 4. AN ACCESS RAMP WILL BE PROVIDED FROM THE QUAY LEVEL TO THE BEACH IN FRONT OF THE QUAY TO FACILITATE PLANT ACCESS FOR MAINTENANCE OF THE PLATFORM

OVERVIEW



KEY PLAN
(NOT TO SCALE)



SECTION A-A
SCALE 1:100

2.0	MARCH 2016	MARINE LICENCE SUBMISSION	HNPWL	HNPWL	HNPWL
Rev	Rev. Date	Purpose of revision	Drawn	Checked	Approved

HORIZON
NUCLEAR POWER

Sunrise House, 1420 Charlton Court, Gloucester Business Park, Gloucester, GL3 4AE, UK
Freephone: 0845 300 6816 Email: info@horizonnuclearpower.com

WYLFA NEWYDD
MARINE LICENCE

TEMPORARY WORKS
BARGE BERTH
GENERAL ARRANGEMENT
AND TYPICAL SECTION

Security Status
NOT PROTECTIVELY MARKED

Scale AS SHOWN@A1 Sheet(s) 1 of 1

Drawing Number
WN0907-HZCON-LAP-DRG-00033 Rev
2.0

© Copyright Horizon Nuclear Power Wylfa Limited. Not to be reproduced (in full or part) without prior permission of Horizon Nuclear Power Wylfa Limited.

