



Maintenance: Career Route Map

Find out more at: www.horizonnuclearpower.com/futures

School / FE College

LEVEL 1

- **GCSE:** D – G
- Welsh Baccalaureate Foundation Skills Challenge Certificate (KS 4) (Applicable to Wales only)
- Engineering Learning Programme Level 1
- Essential Skills

LEVEL 2

- **GCSE:** A* – C, Maths – B, English – C
- Welsh Baccalaureate Foundation or National Skills Challenge Certificate (KS 4) (Applicable to Wales only)
- Engineering Learning Programme Level 2
- Essential Skills
- **BTEC Level 2 / NVQ 2:** Engineering, Construction and Built Environment, Science, ICT.

LEVEL 3

- **BTEC Level 3 / NVQ 3:** Engineering, Construction and Built Environment, Science, ICT.

A LEVEL

- **A Level:** Maths, Physics, Chemistry
- Welsh Baccalaureate Foundation / National Skills Challenge Certificate (Post - 16) (Applicable to Wales only)
- Engineering Learning Programme Level 3
- Essential Skills

FE / HE Education

FE

- BTEC Level 3 Subsidiary Diploma in Engineering.
- BTEC Level 3 Diploma in Operations and Maintenance Engineering.

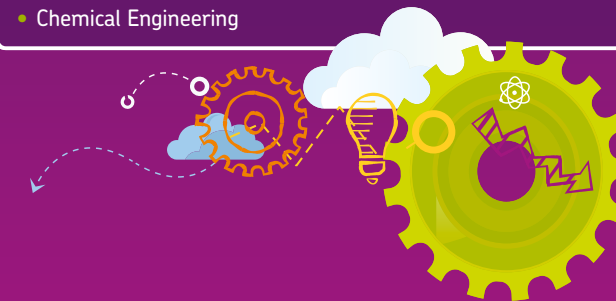
ADVANCED / HIGHER APPRENTICESHIP

Recommended areas:

- Advanced Manufacturing, Power, IT, Electrical, C&I, Mechanical.
- Combining workplace and learning.

UNDERGRADUATE DEGREE

- Control and Instrumentation (C&I) Engineering
- Electronic Engineering / Electrical Engineering
- Mechanical Engineering
- Materials Science
- Chemical Engineering



Maintenance Roles

FOR SKILLED ROLES INCLUDING MAINTENANCE, A TECHNICAL VOCATIONAL QUALIFICATION IS PREFERRED, SUCH AS A RELEVANT APPRENTICESHIP.

Maintenance staff provide support to the power station to ensure the smooth operation of the facility. Maintenance workers on a nuclear power station perform a wide range of important roles that are critical to the everyday running of the plant.

Examples of posts and roles:

MECHANICAL MAINTENANCE TECHNICIANS

ELECTRICAL MAINTENANCE TECHNICIANS

PROCESS COMPUTING MAINTENANCE TECHNICIANS

CONTROL & INSTRUMENTATION TECHNICIANS

MAINTENANCE ENGINEERS

Maintenance Engineers can be promoted from the Maintenance Technicians, therefore a degree is not always necessary.
Engineering – with exception of Physics and Nuclear Engineering